

겐트대학교 입학시험 기출문제

GUGC Online Aptitude Sample Test

본 자료는 겐트대학교 글로벌캠퍼스 입학시험(GUGC Online Aptitude Test) 기출문제로 실제 입학시험의 난이도와 상이할 수 있습니다. 본교 입학시험 관련 상세정보는 겐트대학교 홈페이지 입학안내 페이지(<http://www.ghent.ac.kr/~admexamguid>)를 참고하시거나 겐트대학교 입학학생처(info@ghent.ac.kr / 032-626-4114)로 문의해주시기 바랍니다.

Mathematics topics you should know:

- A. Calculus
 - A. Basic properties (such as increasing/decreasing, positive/negative, zeros) and graphs of polynomial functions, rational functions, irrational (root) functions
 - B. Absolute value function
 - C. One-to-one functions and their inverses
 - D. Basic properties (such as increasing/decreasing, positive/negative, zeros) and graphs of exponential and logarithmic functions
 - E. Limits and continuity
 - F. Vertical, horizontal and oblique asymptotes
 - G. Definition of a derivative, intuitive definition of a derivative derivatives of basic functions, chain rule
 - H. Applications of derivatives: extreme values, concave upward/downward, l'Hospital rule
 - I. Equation of the tangent line to the curve of a graph at a certain point
 - J. Definition of an antiderivative, antiderivatives of basic functions
 - K. Connection between derivatives and antiderivatives
 - L. Definite integrals
 - M. Techniques of integration: substitution rule, integration by parts, partial fractions
- B. Algebra
 - A. Division of polynomials
 - B. Binomium of Newton
 - C. Solving of equations and inequalities involving polynomial, rational, irrational, exponential, logarithmic functions
 - D. Solving of systems of equations
- C. Trigonometry
 - A. Degrees and radians
 - B. Trigonometric functions sine, cosine, tangent, cotangent and their graphs
 - C. Fundamental identity, addition and subtraction formulas, double-angle formulas, half-angle formulas, product-to-sum formulas, sum-to-product formulas
 - D. Proving of trigonometric identities
 - E. Trigonometric equations
 - F. Trigonometry of right triangles
- D. Geometry
 - A. Points, coordinates and equations
 - B. Equation of a circle
 - C. Equation of a line
 - D. Parallel and perpendicular lines

Mathematics Sample Questions

1. Consider the function $f: \mathbb{R} \rightarrow \mathbb{R}: x \mapsto x \cos(x^2)$. Evaluate the derivative of f at the point $\sqrt{2\pi}/2$.
 - a. $f'(\sqrt{2\pi}/2) = -\pi$
 - b. $f'(\sqrt{2\pi}/2) = -\sqrt{2\pi}$
 - c. $f'(\sqrt{2\pi}/2) = \sqrt{2\pi}$
 - d. $f'(\sqrt{2\pi}/2) = 0$
 - e. $f'(\sqrt{2\pi}/2) = 1 - \sqrt{2\pi}$
2. Consider a natural number $m \neq 0$. Evaluate $\lim_{n \rightarrow \infty} \frac{nm}{m-n}$.
 - a. $\frac{m}{m-1}$
 - b. m
 - c. 1
 - d. -1
 - e. $-m$
3. Consider the circle with equation $y^2 - 2y + x^2 + 6x - 15 = 0$. If $M = (a, b)$ is its center and R its radius, then $2a + b + R^2$ is equal to
 - a. 10
 - b. 14
 - c. 20
 - d. 24
 - e. 30
4. Evaluate $\int \frac{e^{\sqrt{x}}}{\sqrt{x}} dx$.
 - a. $e^{\sqrt{x}} + \text{constant}$
 - b. $2e^{\sqrt{x}} + \text{constant}$
 - c. $e^{-\sqrt{x}} + \text{constant}$
 - d. $\sqrt{x}e^{\sqrt{x}} + \text{constant}$
 - e. $\frac{1}{2}e^{\sqrt{x}} + \text{constant}$

5. The trigonometric expression $\frac{1}{\cos x \tan x} - \sin x$ equals
- $\frac{1}{\sin x}$
 - $\frac{\sin x}{\tan x}$
 - $\frac{\tan x}{(\sin x)^2}$
 - $\frac{\cos x}{\cos x \sin x}$
 - $\frac{(\cos x)^2}{\sin x}$
6. A function $f: A \rightarrow B: x \mapsto f(x)$ is a one-to-one function if for all $x, y \in A$ it holds that: if $x \neq y$, then $f(x) \neq f(y)$. Determine which of the following functions is one-to-one.
- $f: \mathbb{N} \times \mathbb{N} \rightarrow \mathbb{N}: (n, m) \mapsto m + n$
 - $f: \mathbb{N} \times \mathbb{N} \rightarrow \mathbb{N}: (n, m) \mapsto mn$
 - $f: \mathbb{N} \times \mathbb{N} \rightarrow \mathbb{N}: (n, m) \mapsto 3^m 5^n$
 - $f: \mathbb{N} \times \mathbb{N} \rightarrow \mathbb{N}: (n, m) \mapsto m^n$
 - $f: \mathbb{N} \times \mathbb{N} \rightarrow \mathbb{N}: (n, m) \mapsto 2^{m+n}$
7. Consider the function $f: \mathbb{R} \rightarrow \mathbb{R}: x \mapsto x - \sqrt{x^2 + 5x}$. Which of the following statements is true?
- f is increasing on its domain.
 - f is decreasing on its domain.
 - f has two distinct zeros.
 - $f(x) \leq 0$ for all x in its domain.
 - f has both negative as positive values on its domain
8. Suppose a, b, c and d are real numbers such that $ab < cd$ and $0 < a < c$. Which of the following statements is definitely true?
- $a < cd$
 - $b < d$
 - $a < \frac{cd}{b}$
 - If $d < 0$, then $b < 0$.
 - If $b < 0$, then $d < 0$.

9. The function sgn is defined as follows: $\text{sgn}(x) = \begin{cases} \frac{x}{|x|}, & x \neq 0 \\ 0, & x = 0 \end{cases}$. Evaluate

$$\int_0^4 x \text{sgn}(2 - x) dx.$$

- a. 8
 - b. 4
 - c. 0
 - d. -4
 - e. -8
10. Suppose $f: \mathbb{R} \rightarrow \mathbb{R}$ is a differentiable function such that $f(x) \geq 0$ for all $x \in \mathbb{R}$ and $P(5,9)$ is a point on the graph of f . The tangent line to the curve of f at P intersects the x -axis at the point $Q(1,0)$. If a function h is defined as $h: \mathbb{R} \rightarrow \mathbb{R}: x \mapsto \sqrt{f(x)}$, then $h'(5)$ equals:
- a. $\frac{3}{8}$
 - b. $\frac{3}{2}$
 - c. $\frac{1}{6}$
 - d. $\frac{9}{8\sqrt{5}}$
 - e. $\frac{2}{27}$

Chemistry topics you should know:

- Elements, mixtures
 - Lavoisier Law
 - Symbolic representation of atoms and molecules, atomic mass, unit of atomic mass, electrons and nucleons (protons and neutrons)
 - Oxidation number, ion and ion charge
 - Reactions between bases and acids
 - Reaction equations: ion exchange reactions, precipitation reactions, combustion reactions, synthesis reactions
 - pH calculations, titration and titration reactions
 - Bohr atom model, Bohr-Sommerfeld model, electron spin, Pauli rule
 - Energy levels: s, p, d, f and orbital (basic knowledge)
 - Electro negativity, electron pairs
 - Covalent and ionic bonds, metal bonds
 - Lewis notation from binary compounds and polyatomic compounds
 - Polar and apolar compounds
 - Intermolecular forces
 - Nomenclature inorganic and organic compounds and ions (basic level)
 - Stoichiometry: molar mass, molar volume, Avogadro constant, ideal gas law, mass density
 - Concentration and concentration units, calculation of masses, volumes, concentrations, excess and limiting reagentia
 - Reaction rate: factors influencing reaction rate, explanation via collision theory model
 - Chemical equilibrium: equilibrium constant, factors influencing chemical equilibrium, calculations with equilibrium data
 - Redox reactions: completion of redox reactions and interpretation of oxidators and reductors
- Sigma and pi bonds
- Solubility of ionic compounds

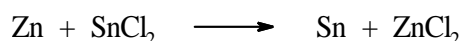
Chemistry Sample Questions

11. The fuel in the buster rockets of the Space Shuttle is constituted of a mixture of ammonium perchlorate, NH_4ClO_4 , and aluminum powder. One of the reactions taking place during taking off is given by

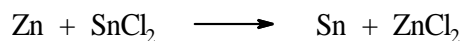


The indication (s) and (g) signify solid and gaseous phase. Suppose that these rockets are loaded with 11.75 tons of ammonium perchlorate and 2.70 tons of aluminum. Calculate the volume of nitrogen gas produced during taking off under normal conditions (0°C and atmospheric pressure, so that 1 mol of gas corresponds to 22.4 L)

- (A) $6.72 \cdot 10^2$ L
 - (B) $1.12 \cdot 10^3$ L
 - (C) $7.47 \cdot 10^4$ L
 - (D) $6.72 \cdot 10^5$ L
 - (E) $1.12 \cdot 10^6$ L
12. If a small zinc rod is put into a solution of tin(II)chloride, SnCl_2 , tin will precipitate on the zinc rod and zinc will go into solution as Zn^{2+} ions.



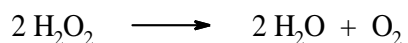
If a lead rod is put into the same tin(II)chloride solution, no precipitation is observed.



What is your conclusion?

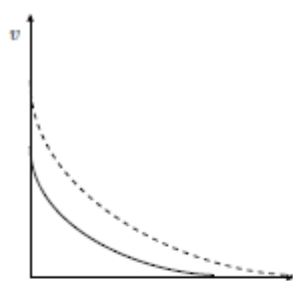
- (A) Lead is a stronger reductor than zinc
- (B) Tin is a stronger reductor than zinc
- (C) Zinc is a stronger reductor than lead
- (D) Tin is a stronger oxidator than zinc
- (E) Zn^{2+} ions are a stronger oxidator than Pb^{2+} ions

13. Hydrogen peroxide, H_2O_2 , spontaneously decomposes in water and oxygen gas

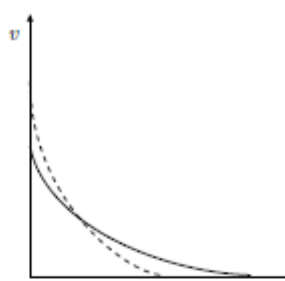


The reaction is one time performed without catalyst (full line) and one time in the presence of a catalyst (dashed line), starting from the same initial amount of hydrogen peroxide.

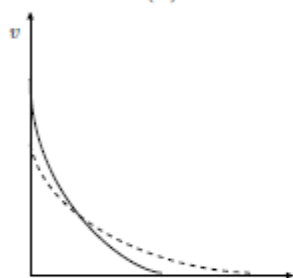
Which of the diagrams gives the correct reaction rate (v) as function of time (horizontal axis)?



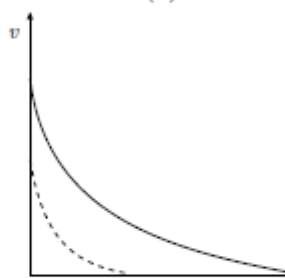
(A)



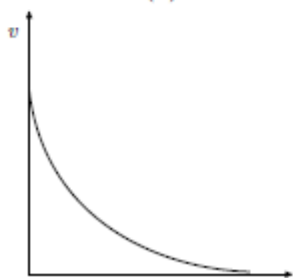
(B)



(C)

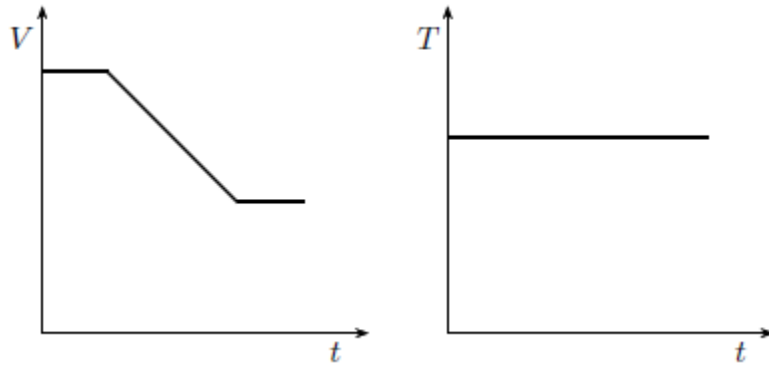


(D)

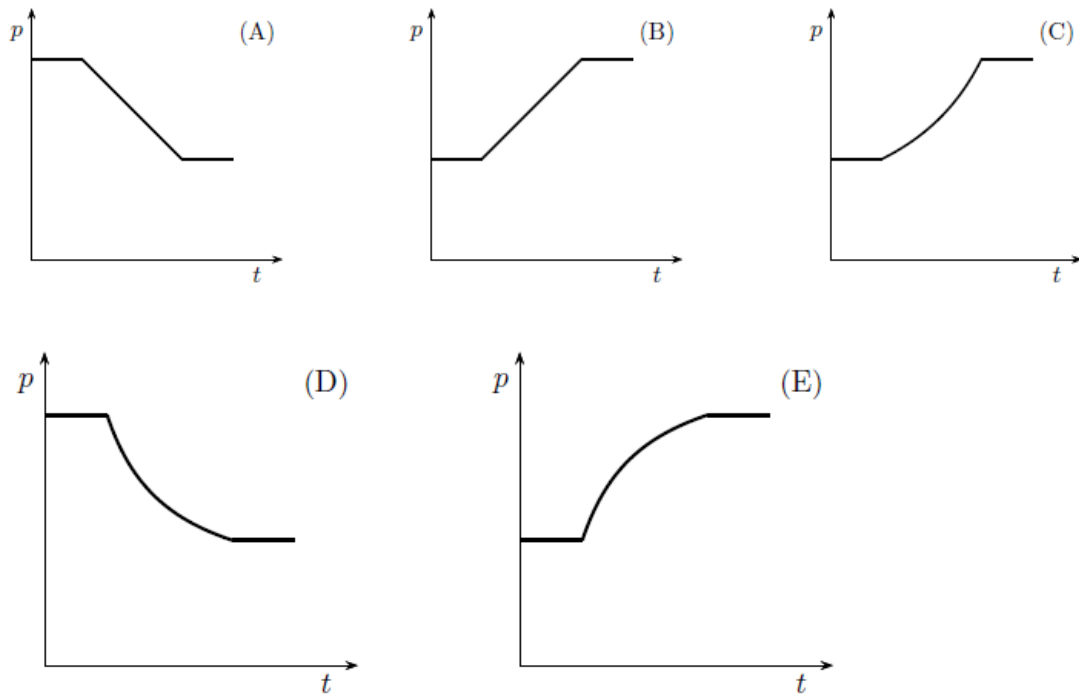


(E)

14. A cylinder with movable piston is filled with an ideal gas. Hence, the relation $pV = nRT$ holds (n is the number of moles). Next figures show the relation of the volume (V) and the temperature (T) as function of time.



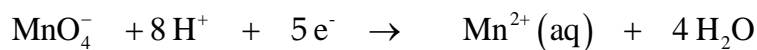
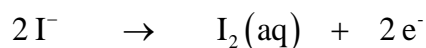
Which graph represents the correct pressure p as function of time?



15. Sulfuric acid has a molar mass of 98 g/mol. In the laboratory there is 100 mL of a 0.10 M sulfuric acid solution. How much water needs to be added to this volume to prepare a solution containing 4.9 g/L of sulfuric acid?

- (A) 10 mL
- (B) 50 mL
- (C) 100 mL
- (D) 150 mL
- (E) 200 mL

16. The ion-electron equations for a redox reaction are given by



How many moles of iodide ions are oxidised by one mole of permanganate ions?

- (A) 0.2
- (B) 0.4
- (C) 1
- (D) 2
- (E) 5

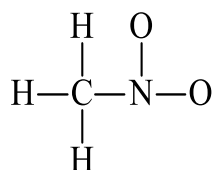
17. If the atomic number of an atom is represented by X and the mass number is represented by Y, the number of neutrons in an atom of this element is

- (A) $Y - X$
- (B) $X - Y$
- (C) $X + Y$
- (D) Y

18. Which of the following is the correct arrangement of electrons in a phosphorus atom (atomic number 15)?

- (A) 2, 8, 4, 1
- (B) 2, 8, 5
- (C) 5, 8, 2
- (D) 2, 5, 8
- (E) 2, 4, 8, 1

19. In the CH_3NO_2 molecule, shown below, what hybrid orbital set is used by the nitrogen atom for bonding? Be sure to check the Lewis structure to make sure it is correct?



- (A) sp
- (B) sp^2
- (C) sp^3
- (D) sp^3d
- (E) sp^3d^2

20. Which of the following temperatures has an equal value expressed in $^{\circ}\text{C}$ and $^{\circ}\text{F}$?

- (A) -40
- (B) -22.2
- (C) 0
- (D) 22.2
- (E) +40

Correct answers:

- 1) A
- 2) E
- 3) C
- 4) B
- 5) E
- 6) C
- 7) D
- 8) D
- 9) D
- 10)A

- 11)D
- 12)C
- 13)B
- 14)C
- 15)C
- 16)E
- 17)A
- 18)B
- 19)B
- 20)A